

# Enhancing ecological performance

## Knowledge system meadow birds

8 october 2019; Dick Melman / Tim Visser



blacktailed godwit



redshank



lapwing



oystercatcher



GEN  
SEARCH

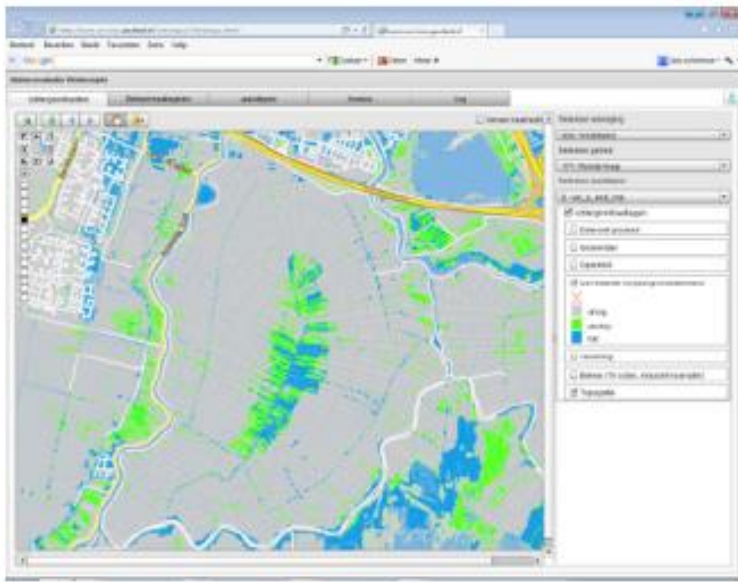
# Web-based Knowledge system:

aid for learning management

- Target group: collectives /farmers
  - Planning
  - Evaluation

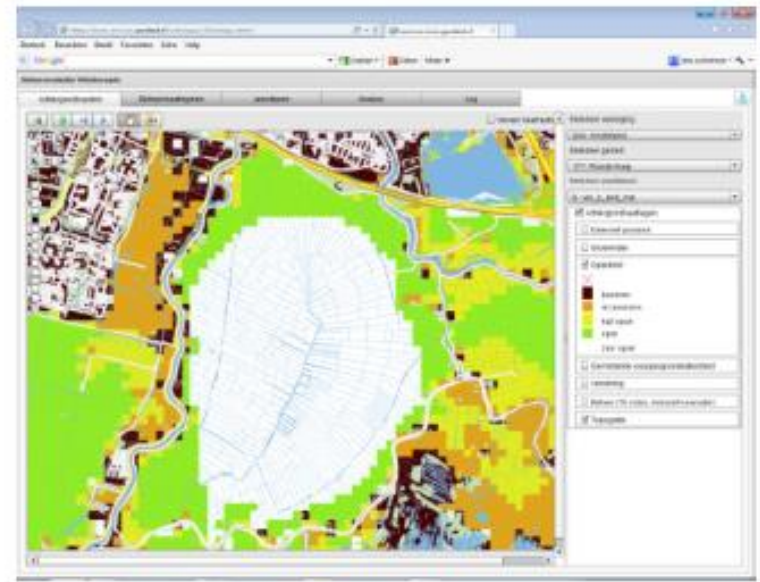
# How does it work?

- Potential habitat quality (excluding management)
- Realized habitat quality (including management)

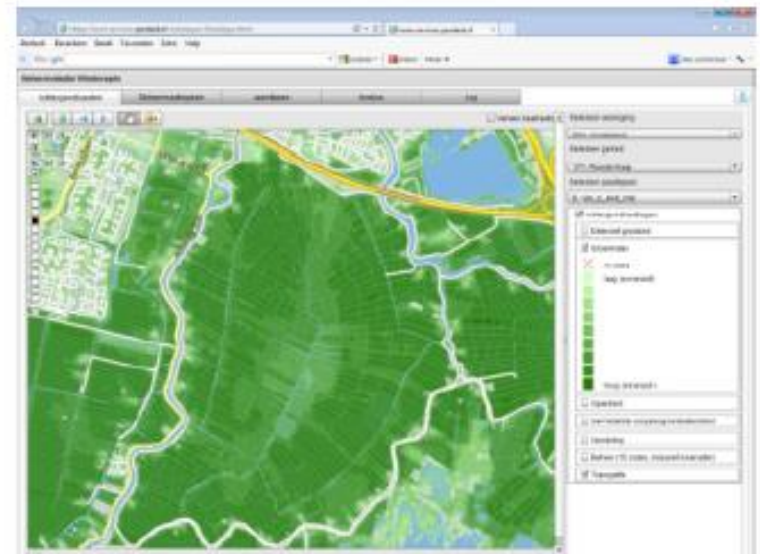
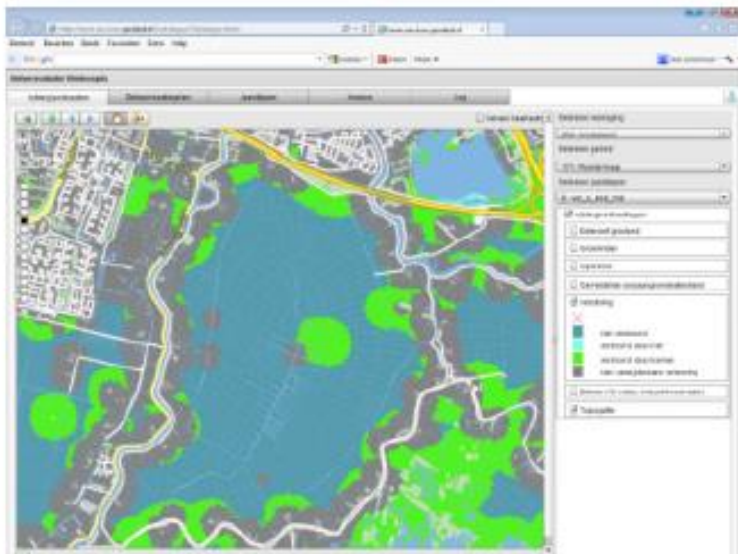


Soil humidity - drainage  
Disturbance

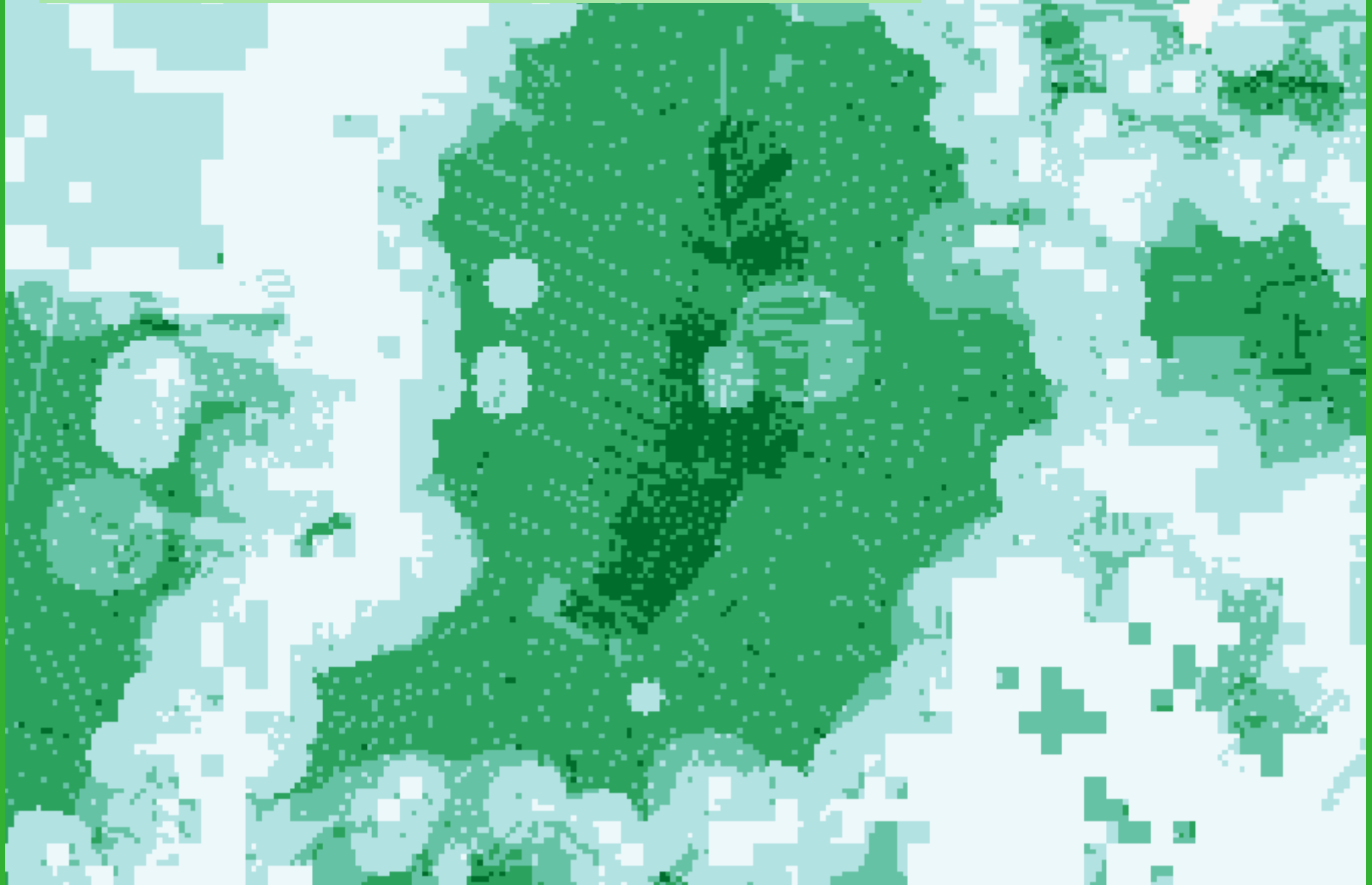
# Basic habitat qualities



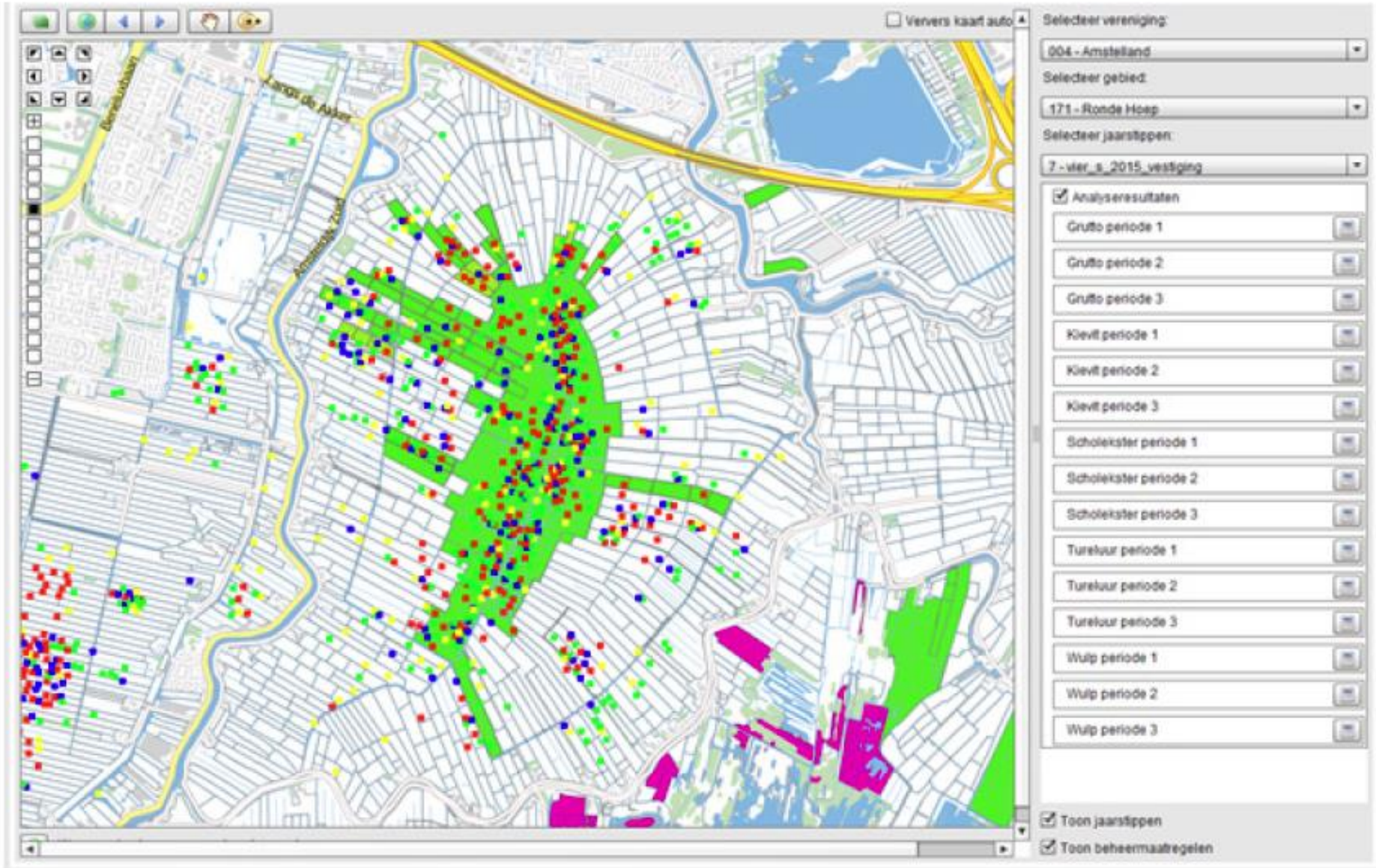
Landscape openness  
Biomass vegetation



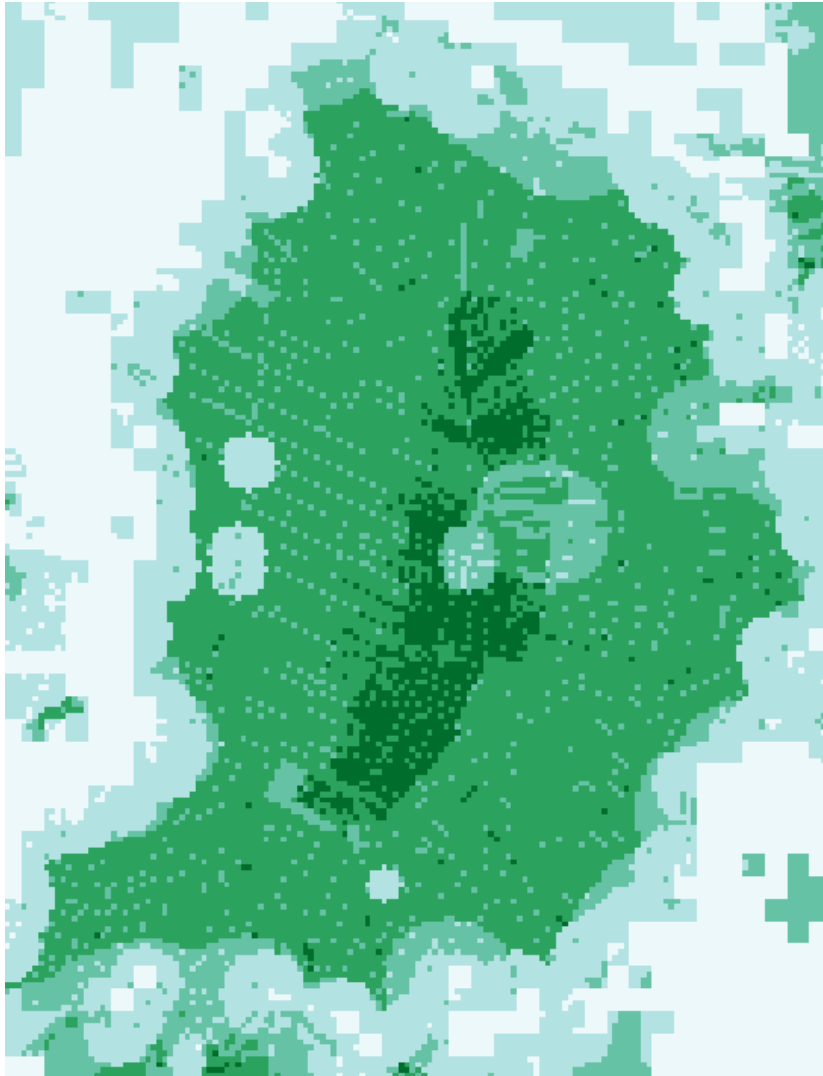
Basic qualities integrated:  
Potential quality



# Managed area (AES-scheme) and meadow bird territories

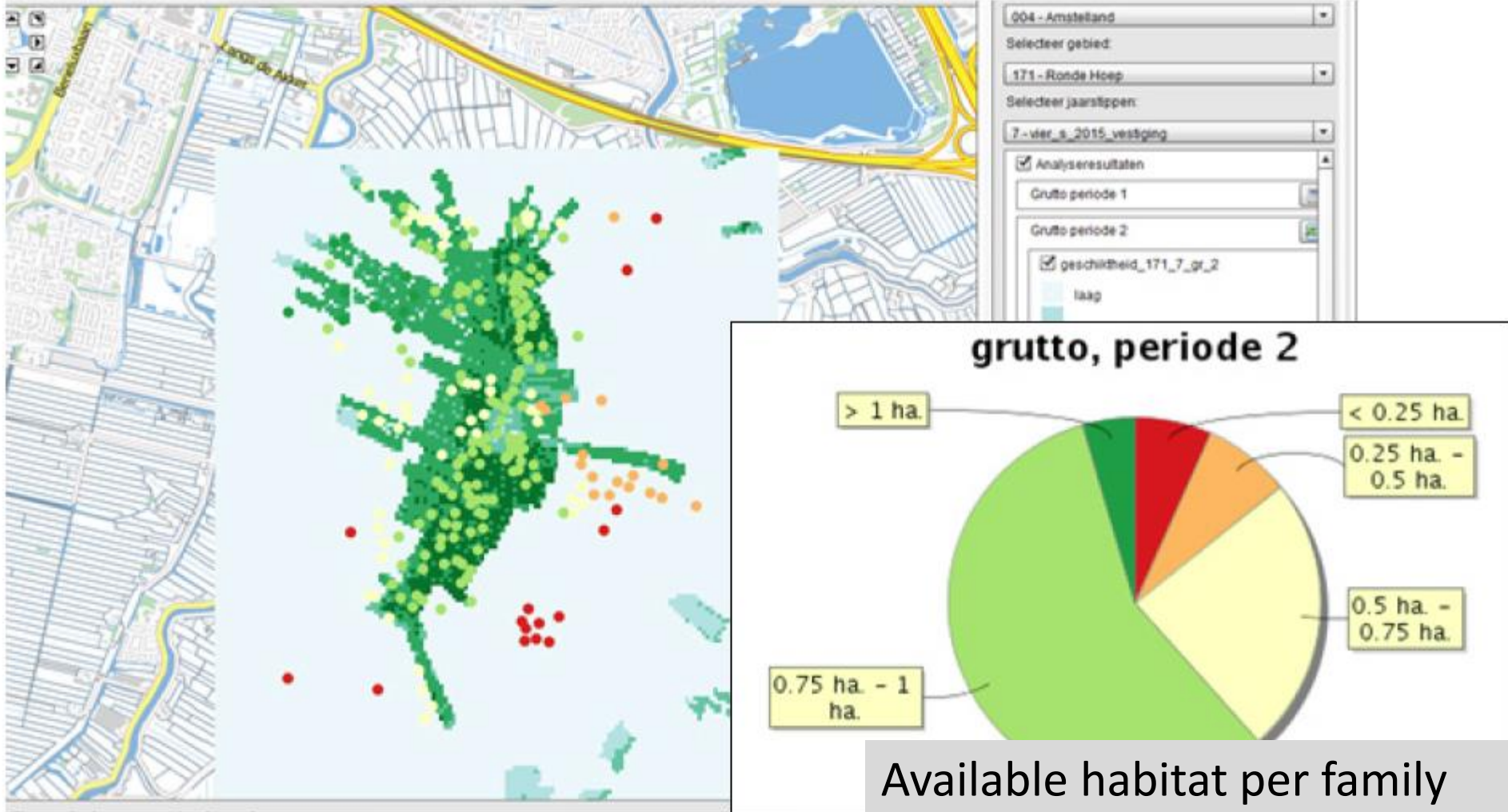


Potential quality + management =>



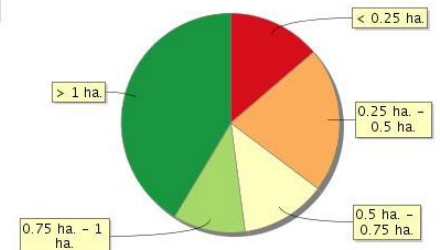
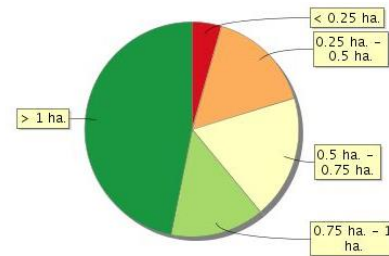
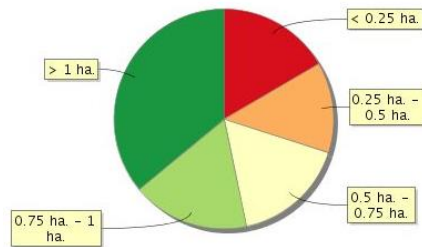
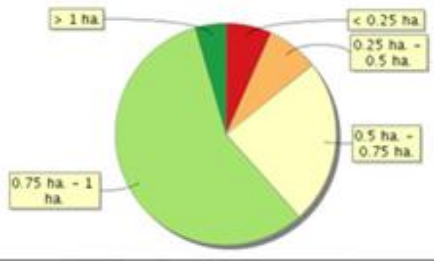
=> Realized quality

# Realized habitat quality





# Comparison four areas (e.g. bench mark)



# Experiences from meetings with collectives

- Learning management
  - Shared insight in needs for improvement
  - Need for actual, reliable information
  - Need for validation
- Knowledge system: part of certified management?